

2014 NCMEA Middle School Sight-Reading

Rhythmic Exercise 1

Musical notation for Rhythmic Exercise 1, consisting of two staves in 4/4 time. The first staff begins with a treble clef and a 4/4 time signature. It contains four measures of music: the first measure has a quarter note, a quarter note, and a quarter note; the second measure has a quarter note, a quarter note, and a half note; the third measure has a quarter note, a quarter note, a quarter note, and a quarter note; the fourth measure has a quarter note, a quarter note, and a half note. The second staff begins with a treble clef and a '5' above the staff. It contains four measures of music: the first measure has a quarter note, a quarter note, a quarter note, and a quarter note; the second measure has a quarter note and a dotted half note; the third measure has a quarter note, a quarter note, a quarter note, and a quarter note; the fourth measure has a quarter note, a quarter note, and a half note. The exercise ends with a double bar line.

Rhythmic Exercise 2

Musical notation for Rhythmic Exercise 2, consisting of two staves in 4/4 time. The first staff begins with a treble clef and a 4/4 time signature. It contains four measures of music: the first measure has a quarter note, a quarter note, and a quarter note; the second measure has a quarter note, a quarter note, and a quarter note; the third measure has a quarter note, a quarter note, and a quarter note; the fourth measure has a quarter note, a quarter note, and a quarter note. The second staff begins with a treble clef and a '5' above the staff. It contains four measures of music: the first measure has a quarter note, a quarter note, and a quarter note; the second measure has a quarter note, a quarter note, and a quarter note; the third measure has a quarter note, a quarter note, and a quarter note; the fourth measure has a quarter note, a quarter note, and a quarter note. The exercise ends with a double bar line.

2014 NCMEA Middle School Sight-Reading

Rhythmic Exercise 3

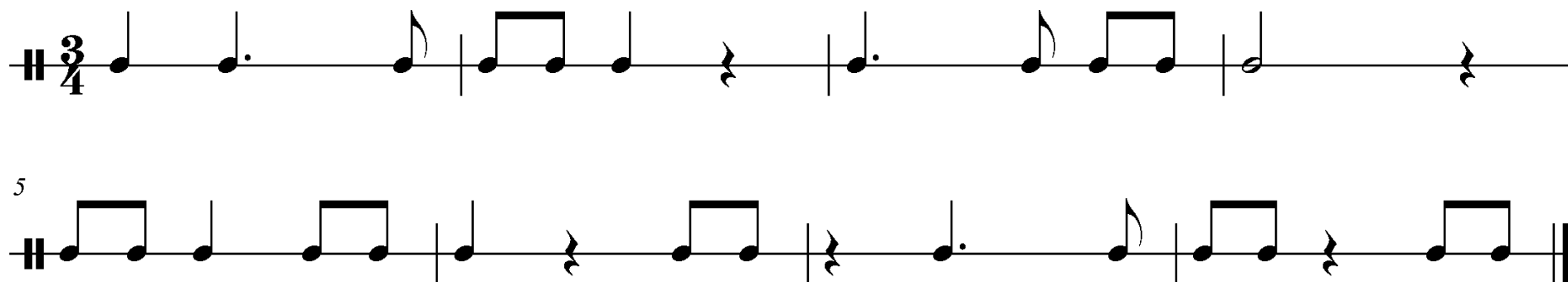
Musical notation for Rhythmic Exercise 3, consisting of two staves in 3/4 time. The first staff begins with a treble clef and a 3/4 time signature. It contains a sequence of notes: a dotted quarter note, followed by a quarter note, a quarter note, and a quarter note. This is followed by a measure with a quarter note, a quarter note, and a quarter note. The second measure of the first staff contains a quarter note, a quarter note, and a quarter note. The second staff begins with a '5' above the staff, indicating a fifth line. It contains a sequence of notes: a quarter note, a quarter note, and a quarter note. This is followed by a measure with a quarter note, a quarter note, and a quarter note. The second measure of the second staff contains a quarter note, a quarter note, and a quarter note. The exercise ends with a double bar line.

Rhythmic Exercise 4

Musical notation for Rhythmic Exercise 4, consisting of two staves in 4/4 time. The first staff begins with a treble clef and a 4/4 time signature. It contains a sequence of notes: a quarter note, a quarter note, a quarter note, and a quarter note. This is followed by a measure with a quarter note, a quarter note, and a quarter note. The second measure of the first staff contains a quarter note, a quarter note, and a quarter note. The second staff begins with a '5' above the staff, indicating a fifth line. It contains a sequence of notes: a quarter note, a quarter note, and a quarter note. This is followed by a measure with a quarter note, a quarter note, and a quarter note. The second measure of the second staff contains a quarter note, a quarter note, and a quarter note. The exercise ends with a double bar line.

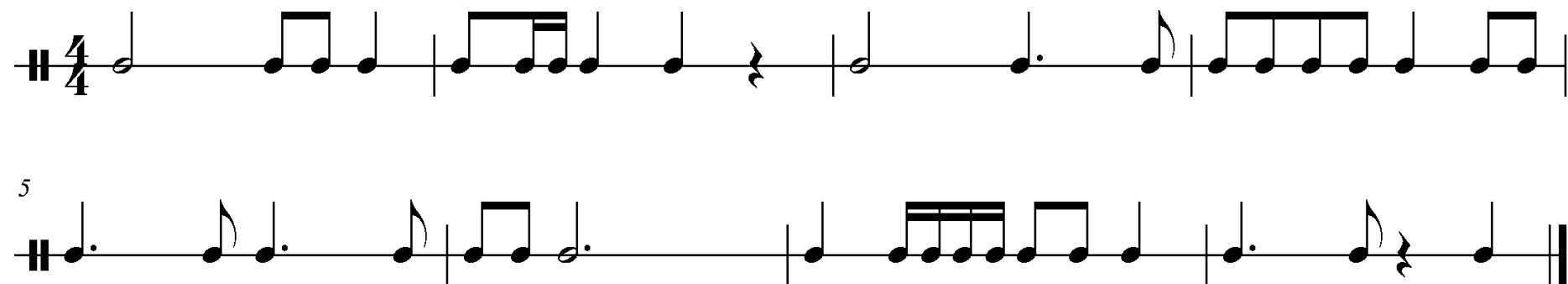
2014 NCMEA Middle School Sight-Reading

Rhythmic Exercise 5



Musical notation for Rhythmic Exercise 5, consisting of two staves. The first staff is in 3/4 time and contains four measures of music. The second staff is marked with a '5' and contains four measures of music. The notation includes various note values such as quarter notes, eighth notes, and dotted notes, along with rests and bar lines.

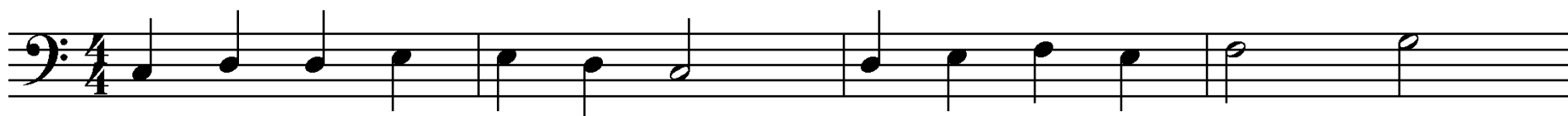
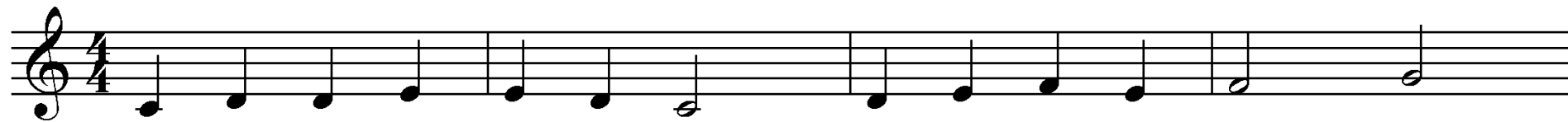
Rhythmic Exercise 6



Musical notation for Rhythmic Exercise 6, consisting of two staves. The first staff is in 4/4 time and contains four measures of music. The second staff is marked with a '5' and contains four measures of music. The notation includes various note values such as quarter notes, eighth notes, and dotted notes, along with rests and bar lines.

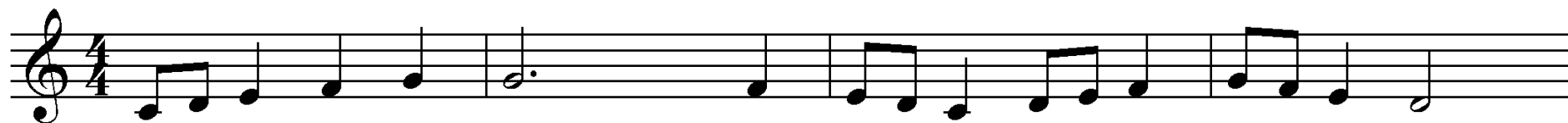
2014 NCMEA Middle School Sight-Reading

Melodic Exercise 1



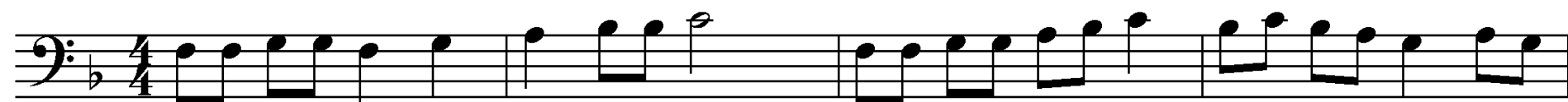
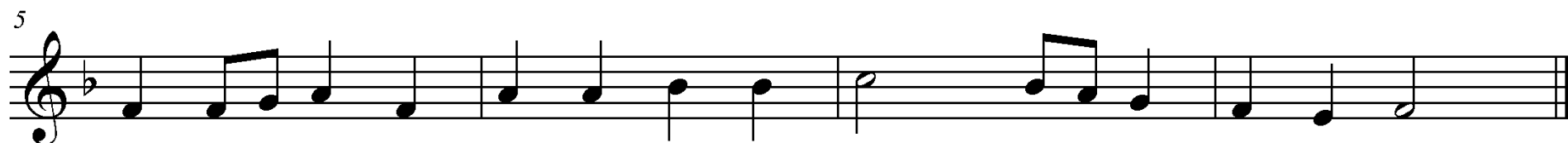
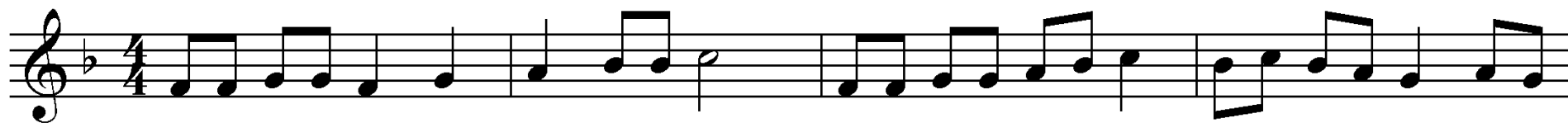
2014 NCMEA Middle School Sight-Reading

Melodic Exercise 2



2014 NCMEA Middle School Sight-Reading

Melodic Exercise 3



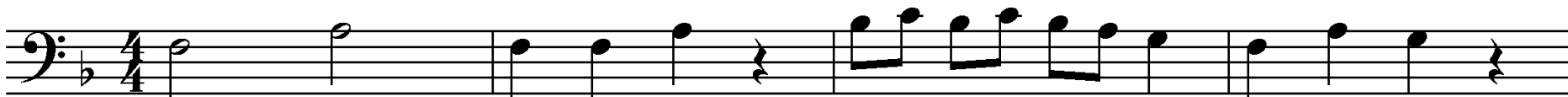
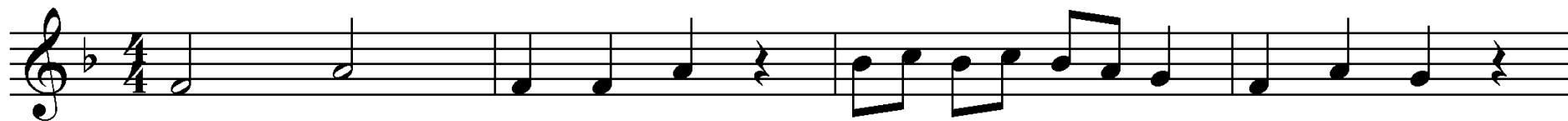
2014 NCMEA Middle School Sight-Reading

Melodic Exercise 4



2014 NCMEA Middle School Sight-Reading

Melodic Exercise 5



2014 NCMEA Middle School Sight-Reading

Melodic Exercise 6 Two-Part Exercise

