

2013 NCMEA Middle School Sight-Reading

Rhythmic Exercise 1

Musical notation for Rhythmic Exercise 1, consisting of two staves. The first staff is in 4/4 time and contains four measures of music: a quarter note, a quarter note, a half note, and a quarter note; a quarter note, a quarter note, a quarter note, and a quarter note; a half note, a half note, and a whole note; and a quarter note, a quarter note, a quarter note, and a quarter note. The second staff is in 5/4 time and contains four measures: a quarter note, a quarter note, a quarter note, and a quarter rest; a quarter note, a quarter note, a quarter note, and a quarter rest; a half note, a quarter note, a quarter note, and a quarter note; and a half note, a quarter note, and a whole note.

Rhythmic Exercise 2

Musical notation for Rhythmic Exercise 2, consisting of two staves. The first staff is in 4/4 time and contains four measures: a quarter note, a quarter note, a quarter note, and a quarter note; a quarter note, a quarter note, a quarter note, and a quarter note; a quarter note, a quarter note, a quarter note, and a quarter rest; and a quarter note, a quarter note, a quarter note, and a quarter note. The second staff is in 5/4 time and contains four measures: a quarter note, a quarter rest, a quarter note, and a quarter note; a quarter note, a quarter note, a quarter note, and a quarter note; a quarter note, a quarter note, a quarter note, and a quarter note; and a half note, a quarter note, and a whole note.

2013 NCMEA Middle School Sight-Reading

Rhythmic Exercise 3

5

Musical notation for Rhythmic Exercise 3, measures 1-5. The piece is in 4/4 time. Measure 1: Quarter note, quarter note, quarter note, quarter note. Measure 2: Quarter note, eighth note beamed eighth note, quarter note, quarter note. Measure 3: Quarter note, quarter note, quarter note, quarter note. Measure 4: Quarter note, quarter note, quarter note, quarter note. Measure 5: Quarter note, quarter note, quarter note, quarter note.

Rhythmic Exercise 4

5

Musical notation for Rhythmic Exercise 4, measures 1-5. The piece is in 3/4 time. Measure 1: Quarter note, quarter note, quarter note. Measure 2: Quarter note, quarter note, quarter note. Measure 3: Quarter note, quarter note, quarter note. Measure 4: Quarter note, quarter note, quarter note. Measure 5: Quarter note, quarter note, quarter note.

2013 NCMEA Middle School Sight-Reading

Rhythmic Exercise 5

5

The first staff of Rhythmic Exercise 5 is in 4/4 time. It begins with a double bar line and a 4/4 time signature. The melody consists of: a dotted quarter note, an eighth note followed by a quarter note, a dotted quarter note, an eighth note followed by a quarter note, a dotted quarter note, a quarter note, a quarter rest, an eighth note followed by a quarter note, a dotted quarter note, a quarter rest, an eighth note followed by a quarter note, and a quarter rest. The second staff begins with a '5' above the staff, indicating a fingering for the first note. It contains: a dotted quarter note, an eighth note followed by a quarter note, a dotted quarter note, an eighth note followed by a quarter note, an eighth note followed by a quarter note, an eighth note followed by a quarter note, a dotted quarter note, a quarter rest, an eighth note followed by a quarter note, an eighth note followed by a quarter note, and a dotted quarter note. The exercise ends with a double bar line.

Rhythmic Exercise 6

5

The first staff of Rhythmic Exercise 6 is in 3/4 time. It begins with a double bar line and a 3/4 time signature. The melody consists of: a dotted quarter note, an eighth note followed by a quarter note, a quarter rest, an eighth note followed by a quarter note, an eighth note followed by a quarter note, a dotted quarter note, an eighth note followed by a quarter note, a quarter rest, a dotted quarter note, and an eighth note followed by a quarter note. The second staff begins with a '5' above the staff, indicating a fingering for the first note. It contains: an eighth note followed by a quarter note, an eighth note followed by a quarter note, an eighth note followed by a quarter note, an eighth note followed by a quarter note, a dotted quarter note, an eighth note followed by a quarter note, a dotted quarter note, an eighth note followed by a quarter note, a dotted quarter note, a quarter rest, and a dotted quarter note. The exercise ends with a double bar line.

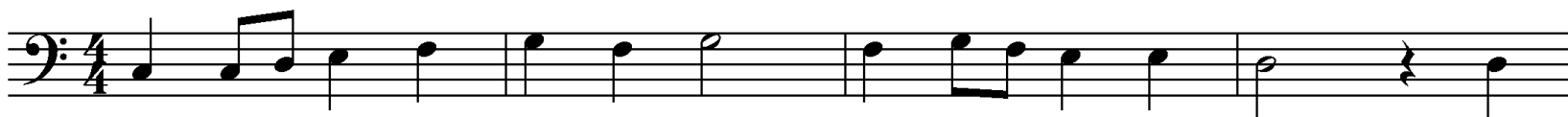
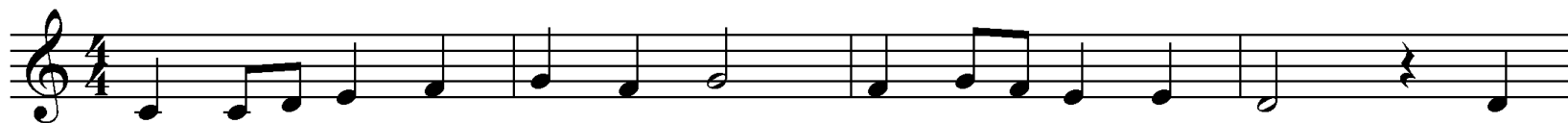
2013 NCMEA Middle School Sight-Reading

Melodic Exercise 1



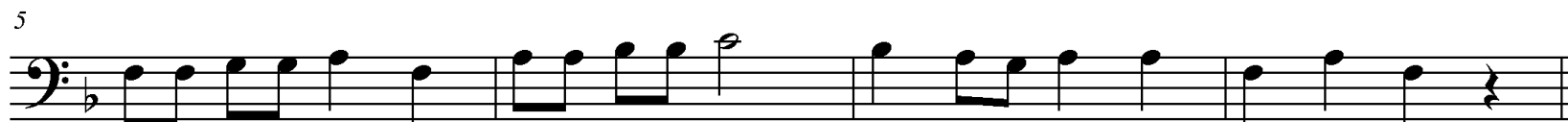
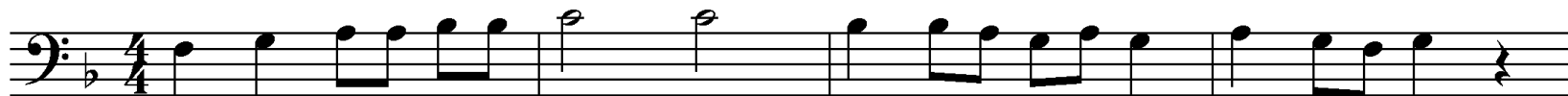
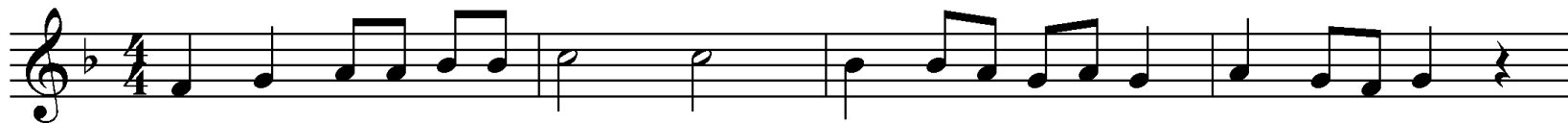
2013 NCMEA Middle School Sight-Reading

Melodic Exercise 2



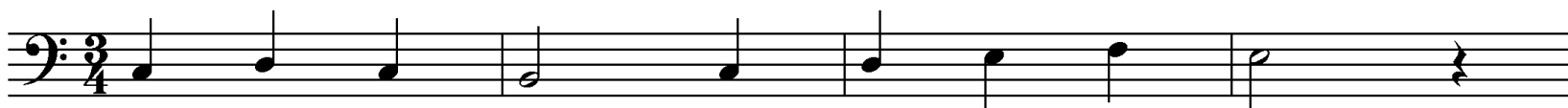
Melodic Exercise 3

2013 NCMEA Middle School Sight-Reading



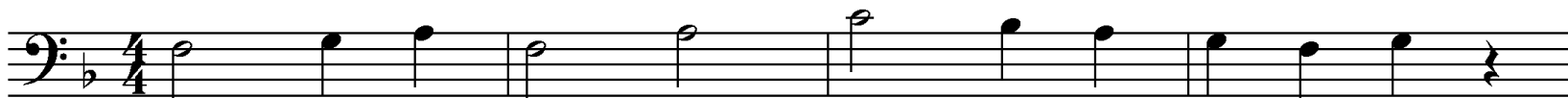
2013 NCMEA Middle School Sight-Reading

Melodic Exercise 4



2013 NCMEA Middle School Sight-Reading

Melodic Exercise 5



2013 NCMEA Middle School Sight-Reading

Melodic Exercise 6 Two-Part Exercise

